

Specification sheet LX 1343

Parapet drainage Series 89 RAINSTAR® penetration depth 55 mm, for inverted roofs

Emergency drainage

Gravity flow

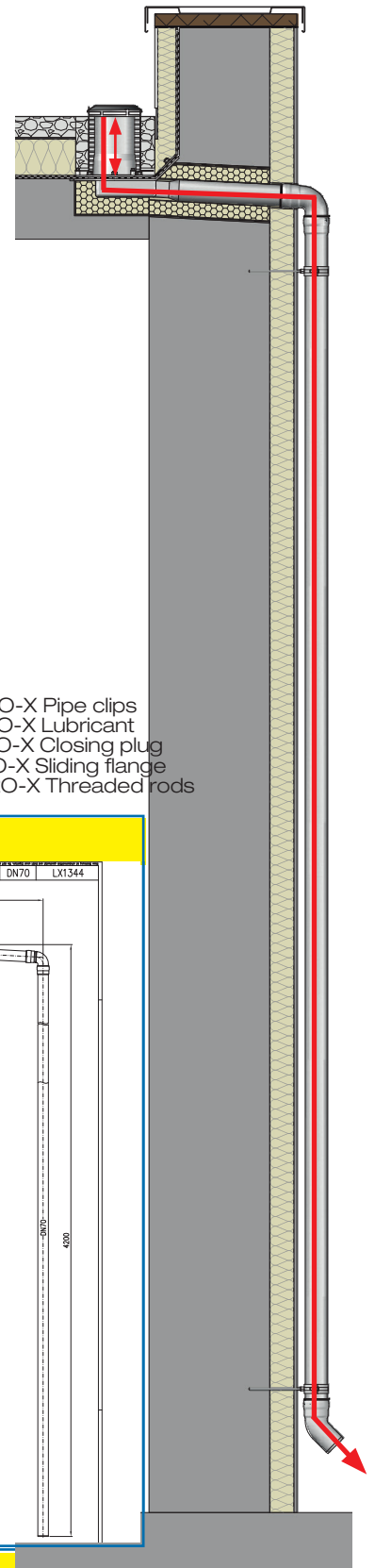
Silent Power

Discharge rate:	6,5 l/sec
Water height:	135 mm
Roof penetration:	55
Diameter:	DN 70
LX-Number:	LX 1343
Weir height:	100 mm
Drain:	ventilated
Downpipe:	not ventilated
Downpipe height:	4,2 m
Drainage:	on floor
Flange:	clamping flange 45°

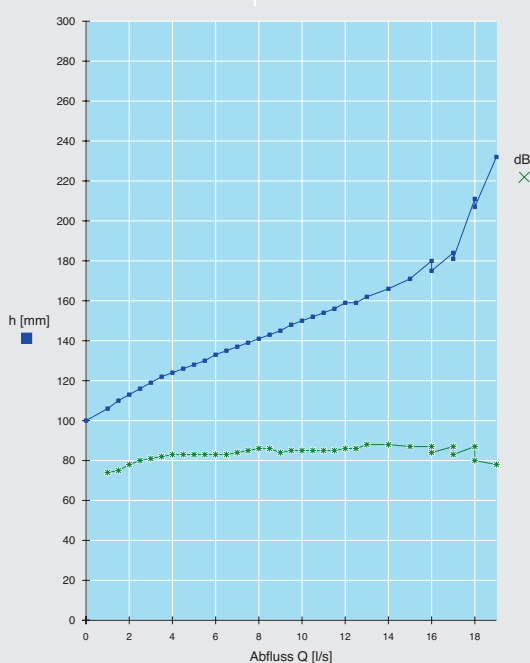
LX 1343 Piece list

1 x Art.-No. 13628.070X, RAINSTAR for inverted roofs
 1 x Art.-No. 01301.070X, LORO-X Pipe with one socket
 1 x Art.-No. 00500.070X, LORO-X Bend
 1 x Art.-No. 01011.070X, LORO-X Pipe with one socket
 1 x Art.-No. 00320.070X, LORO-X Bend
 4 x Art.-No. 00911.070X, LORO-X Sealing elements

3 x Art.-No. 00973.070X, LORO-X Pipe clips
 1 x Art.-No. 00986.000X, LORO-X Lubricant
 1 x Art.-No. 00805.070X, LORO-X Closing plug
 1 x Art.-No. 13235.070X, LORO-X Sliding flange
 3 x Art.-No. 09603.200X, LORO-X Threaded rods

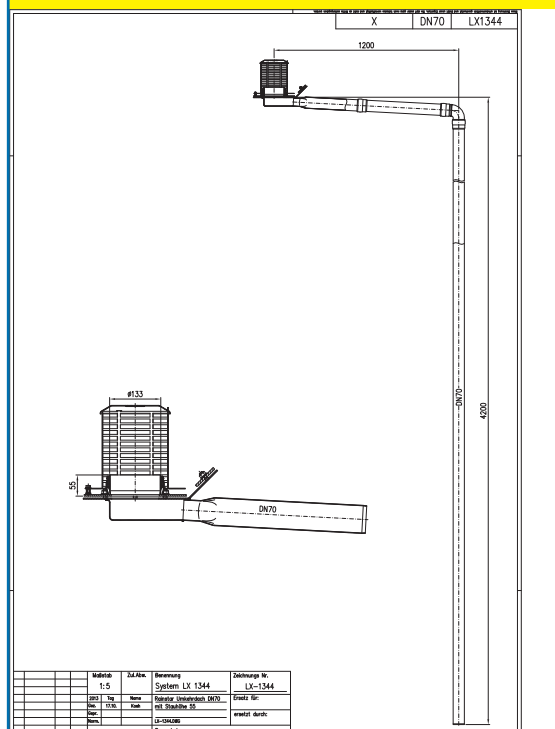


hQ - Head Discharge curve



Systempower

CAD



Systemshape

Water height	mm	110	115	120	125	130	135	140	145	150	155	160	165	170	175	180
Discharge	l/sec	1,5	2,5	3,0	4,5	5,5	6,5	8,0	9,0	10,0	11,0	12,0	14,0	15,0	16,0	17,0
Silent Power																

Series 89
LORO-X RAINSTAR® penetration depth 55 mm
parapet **emergency drainage** for inverted roofs

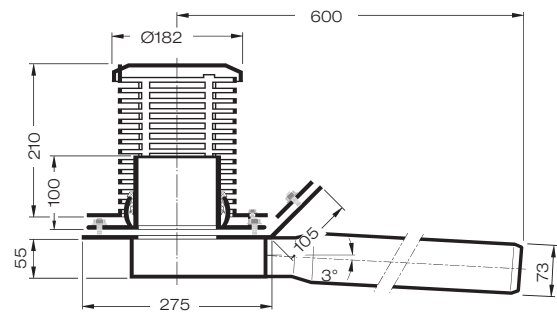
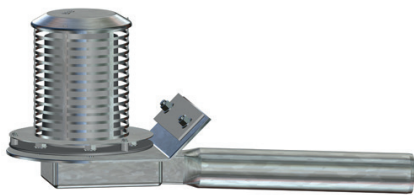
DN 70

LX1343-2X**Series 89**

Drain Art.-No. 13628.070X

Weight: 7,2 kg

with clamping flange 45°
with roof penetration of 55 mm
for bituminous roofing sheets



Heat tracing: LOROWERK recommends to check all drains and pipes with regard to their frost-sensibility. Where necessary, these parts should be upgraded with heat tracing.